



Short description for WinNC Update Installation
Operation Manual

valid for all Concept Machines

Edition 2017-06

EN

EMCO GmbH

P.O. Box 131

A-5400 Hallein-Taxach/Austria

Phone +43-(0)62 45-891-0

Fax +43-(0)62 45-869 65

Internet: www.emco-world.com

E-Mail: service@emco.at

1. General requirements

To install this WinNC software, administrator rights are mandatory.

System requirements:

- Windows 7 or higher (32 / 64 Bit)
- free hard drive space 400 MB
- Programming station: 1*USB, machine version: 2*USB
- TCP/IP-capable network card for machine version)

2. Requirements for the machine installation

Required data

- WinNC update
- PLC data
- ACC update

The current data for PLC can be downloaded from the EMCO website:

www.emco-world.com

"products / training / software controls / WinNC / Download".

The PLC update is a zip file which must be extracted on the host machine before installing the interface.

During the installation of the control software you'll be prompted to enter the path for the PLC data.

UPDATES/UPGRADES		Title	Version	Filesize
1	Get up to date. The only requirement is that you have a valid license key. The improvements concerning the update are documented in History.	UPDATE	1.08.0003	43.52 MB
2	You are reminded that, in case of an update, all WinNC-components (WinNC-controls, 3DView, DNC, Robotic, CAMConcept,...) located in the regarding directory must be updated to the current release-version.	short description für update installation		415.01 KB
3		ACC update	2.32	20.66 MB
		MSD/PLC	2015.07.09	718.59 KB
		Remove SPOX	2006.12.05	1.92 MB
		AC95_ACC	2013.10.15	3.12 MB
		AC88_ACC	2013.10.15	3.11 MB
		ACpn Update	1.06	190.65 MB

File download from the EMCO homepage

The following data needs to be downloaded:

- Update (1)
- ACC update (2)
- MSD/PLC (3)

3. Data backup

Before each update installation, the existing data must be backed up.

Create a backup copy of the directory:
C:\WinNC32.

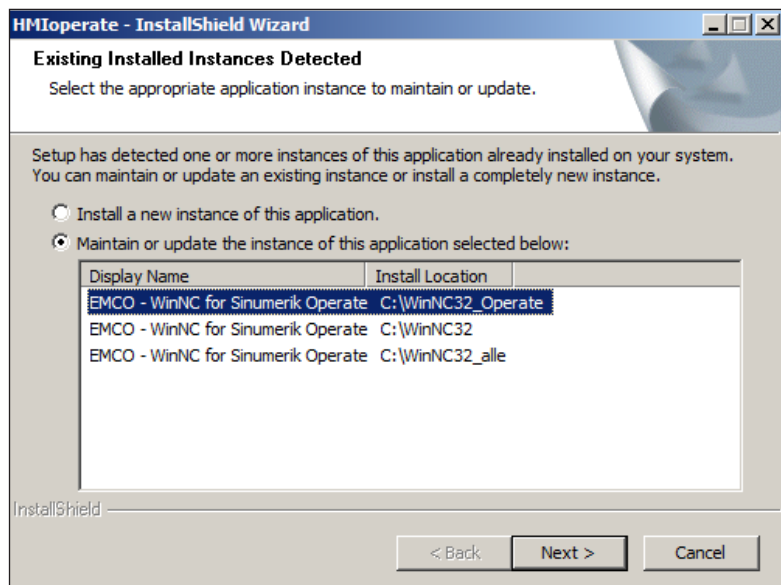
4. Update installation

Start the installation by double-clicking the "update.exe" file.

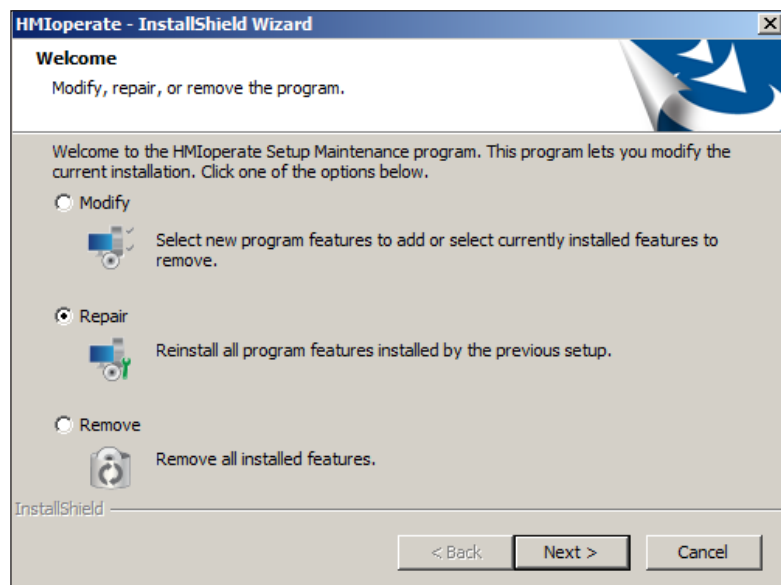
Follow the instructions from the installation guide.

Note:

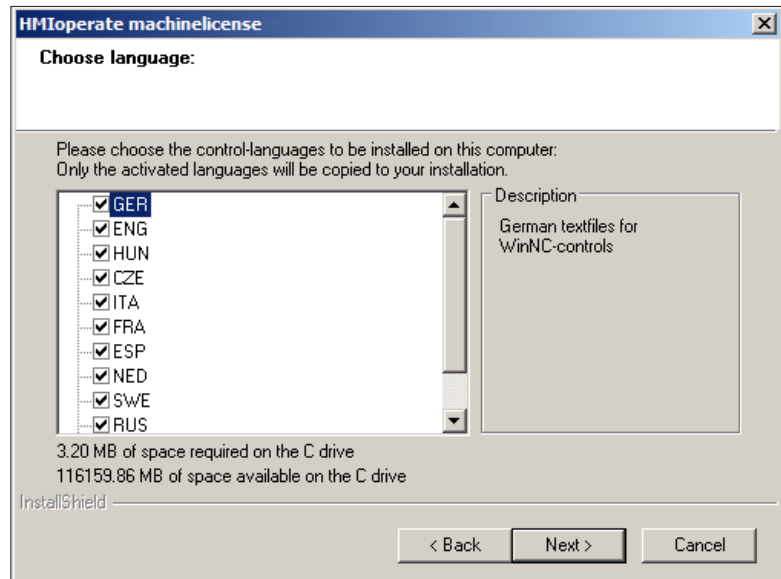
Depending on the machine and on the operating system that is used, the WinNC which is used or if you're working on a machine job or on a programming job, these selections may be different.



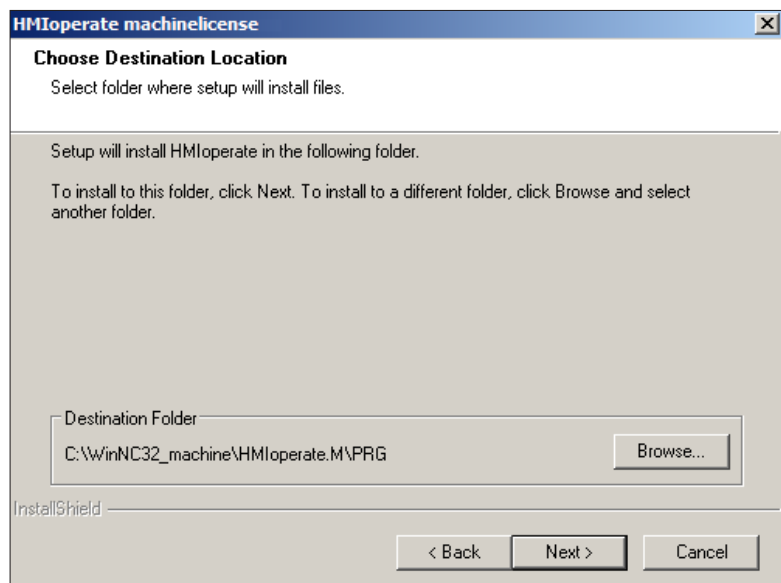
Start the update installation



Choose repair program

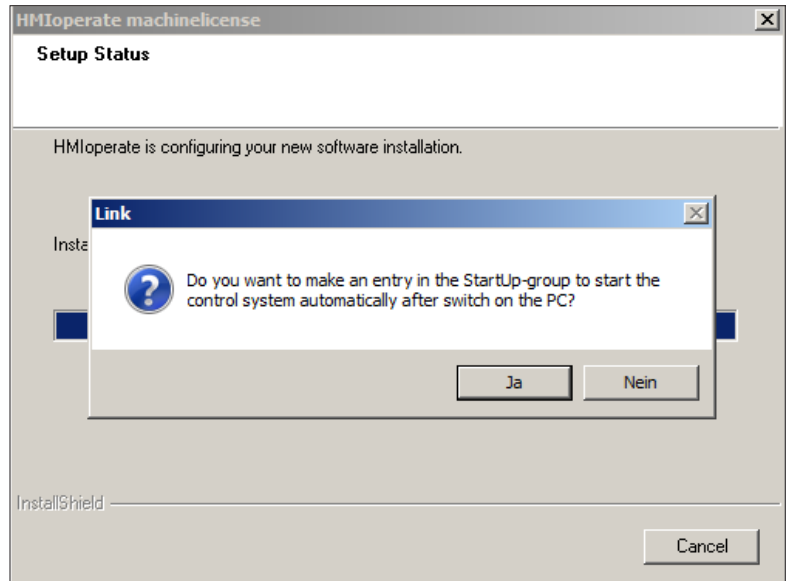


Choose language



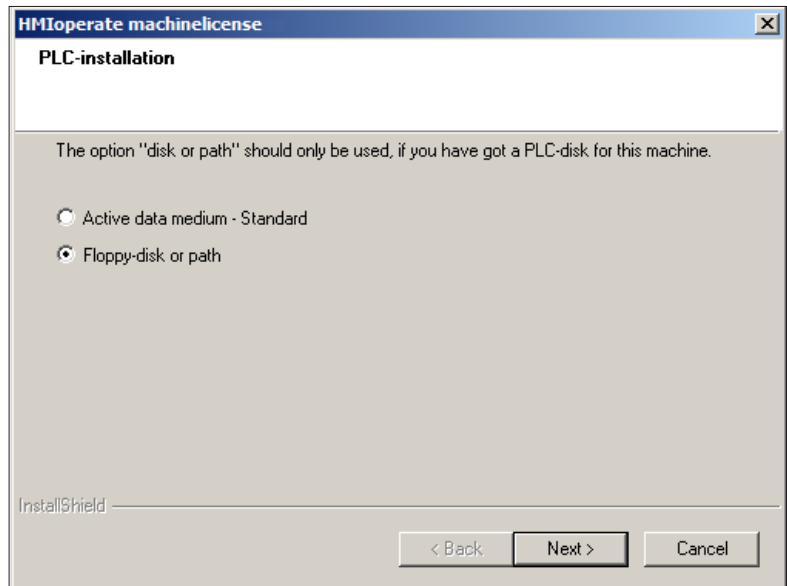
Select destination folder

Select Next and continue



Create entry in the Start-up group

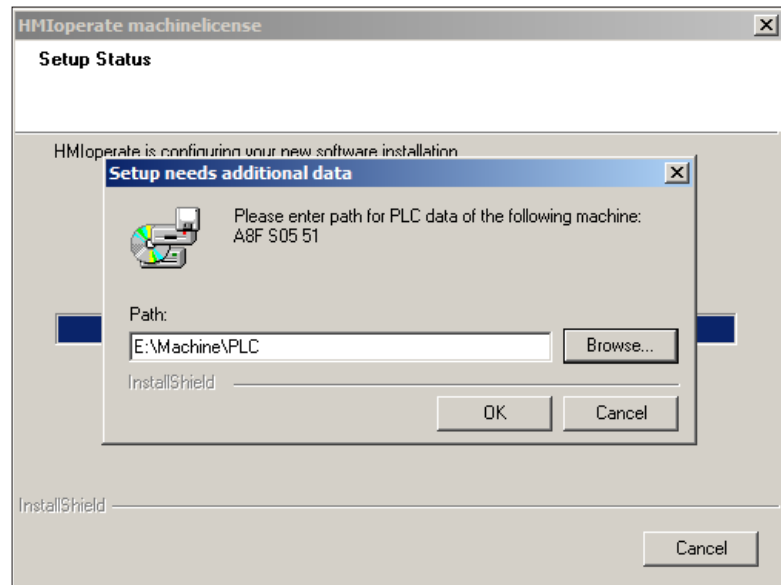
Select Yes and continue



Options for the PLC installation

Select Floppy-disk or path. Now it is ensured that the current PLC is loaded.

If the option Floppy-disk or path is selected, the following screen appears:



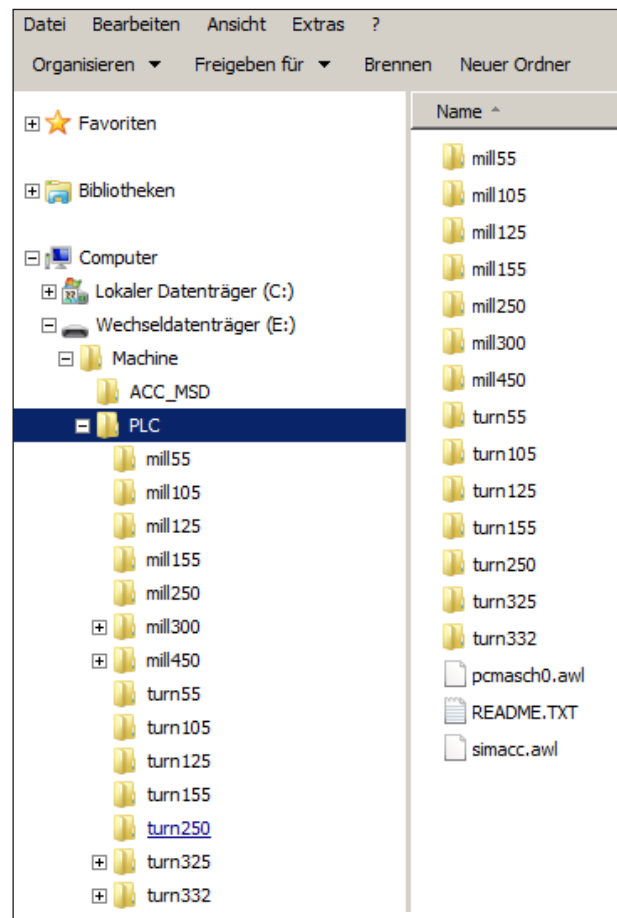
Enter path for PLC data

Enter the path where the PLC is stored.

The path has to be input inclusive „PLC“ (the directory can be searched with „browse“).

Make sure that the PLC update is already downloaded and unzipped, also refer to page 2, file-download from the EMCO homepage.

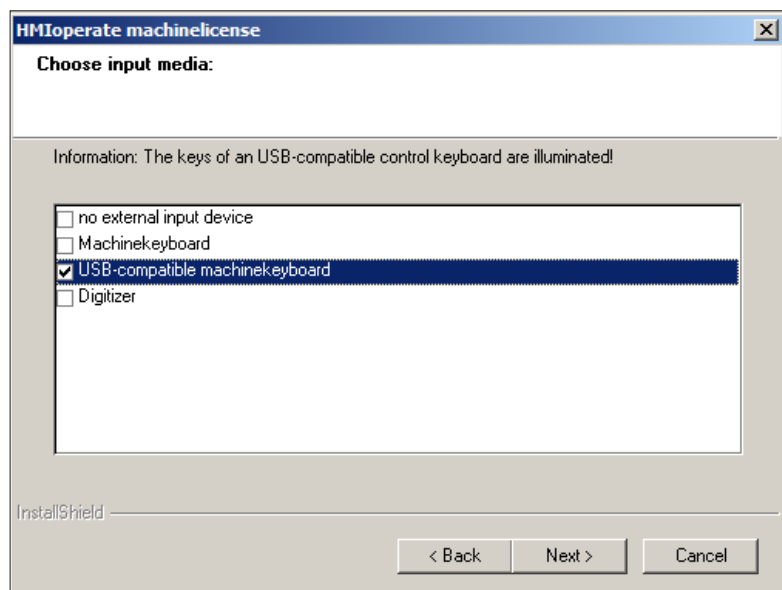
See below the file-structure as shown from the Windows Explorer:



Filestructure

During installation, it is checked whether a USB keyboard is connected. It's automatically configured during installation as soon as it is recognized.

The following prompt is displayed only in case that no USB keyboard is connected. Therefore it's recommended to install the USB keyboard before starting the software installation.



Choose input media

Note:

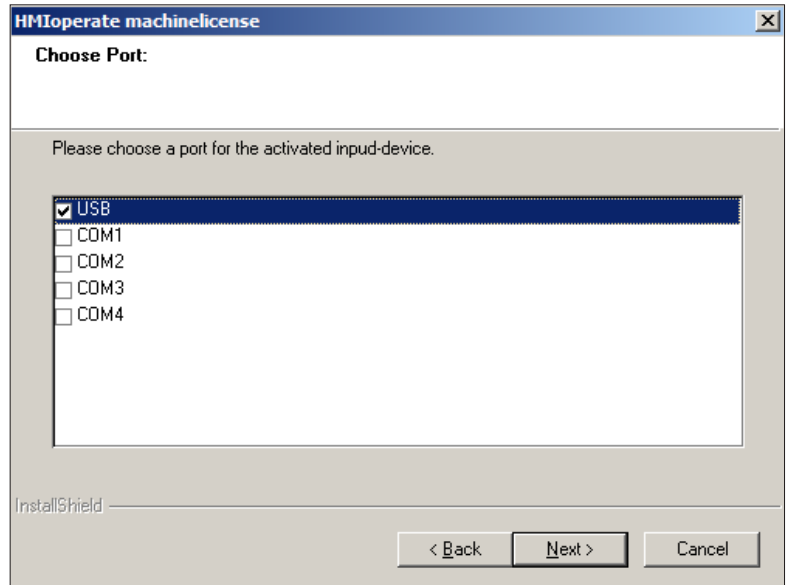
Depending on the machine that is used, the WinNC which is used or if you're working on a machine job or on a programming job, this selection may be different.



"USB compatible machinekeyboard" is used on all ACC machines.

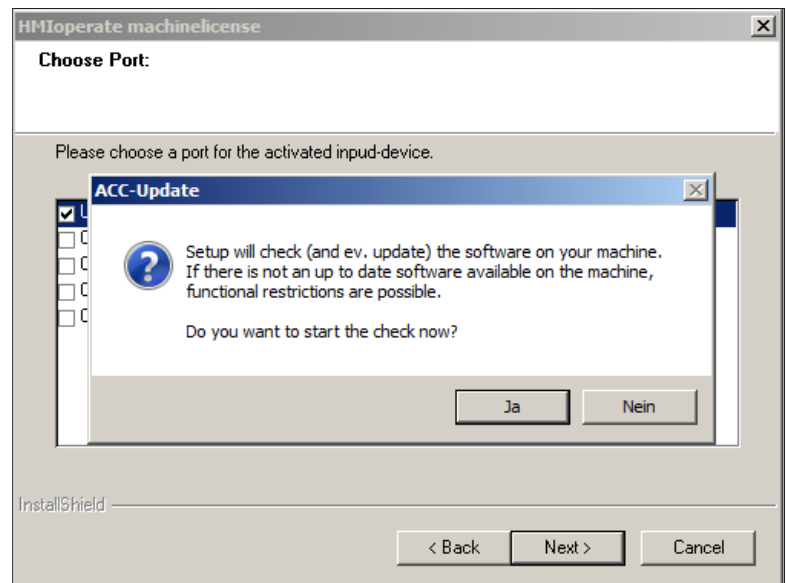
Exceptions are the machines PCT125 and PCM125, PCT50/55 and PCM50/55 that have been converted to ACC and are using the old EMCO keyboard.

In that case "machinekeyboard" must be selected. (Connection to a PC via the serial port COM1, COM2 ...).



Choose port

Select USB for all ACC machines.
 Exception: PCT345/PCM300 that have been converted to ACC. For these machines COM1 must be selected.

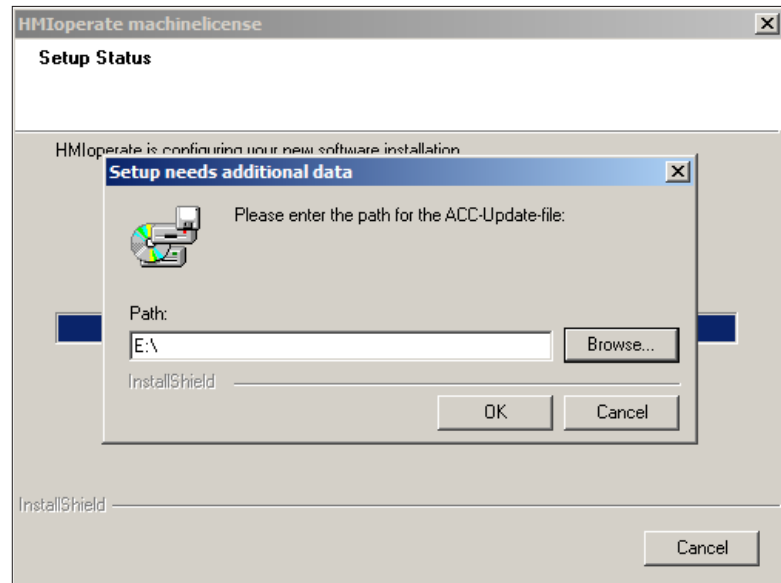


Check for ACC update

Note:
 To perform the ACC update, the CNC machine has to be turned on and must be ready for service.



Select YES to continue if you wish to perform the check of your software.
 Download the ACC Update as described on page 2.



Enter path for the ACC-update

Performing an update of one WinNC component, make sure that all WinNC components from the appropriate directory are updated. This also applies to Win3D-view, Robotic Interface and the DNC interface. Thus the proper functioning of the software is guaranteed.